



# PRINTED DESIGNS

FLAME RETARDANT FABRICS

**LOUVOLITE**  
COMMERCIAL

[www.louvolitecommercial.com](http://www.louvolitecommercial.com)

## SHEER FR PRINTS



**CHERRY BLOSSOM  
MISTY BLUE**

2m 1017473A



**MONET  
FLOWER**

2m 2189202A



**PETAL  
WHITE**

2m 2190910A  
89mm 2190910D

## LIGHT FILTERING RECYCLED FR PRINTS



**COTTON FLOWER  
MINERAL**

2.05m 1999624A  
89mm 1999624D



**LILY  
MUTED DUCKEGG**

2.05m 2005423A



**SWEDISH BIRCH  
SILVER**

2.05m 1996498A



**BIRDSONG  
DAYBREAK**

2.05m 1755100A



**OPHELIA  
BREEZE**

2.05m 2002300A



**BIRDSONG  
COLOUR CRUSH**

2.05m 1755177A



**FLORES  
SPRING**

2.05m 2009783A



**COMO  
LAGO**

2.05m 1007783A  
89mm 1007783D

# LIGHT FILTERING RECYCLED FR PRINTS



**MONET  
BLOOM**

2.05m 2192236A



**LILY  
SPRING BLOSSOM**

2.05m 2005152A



**COTTON FLOWER  
BLUSH**

2.05m 1999430A  
89mm 1999430D



**TROPICAL PALM  
FIESTA**

2.05m 2191614A



**COMO  
VERDE**

2.05m 1007714A  
89mm 1007714D



**LILY  
MELLOW SAGE**

2.05m 2005210A



**FLORES  
AUTUMN**

2.05m 2009714A



**OPHELIA  
ZEPHYR**

2.05m 2002334A



**BIRDSONG  
MIDNIGHT**

2.05m 1755294A



**COMO  
OCRA**

2.05m 1007183A  
89mm 1007183D



**COTTON FLOWER  
OCHRE**

2.05m 1999310A  
89mm 1999310D

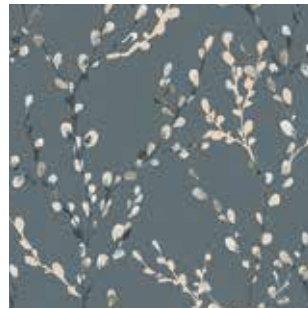


# BLACKOUT RECYCLED FR PRINTS



**WILLOW  
MORNING MIST**

2.05m 1723373A



**WILLOW  
COOL BLUE**

2.05m 2188673A



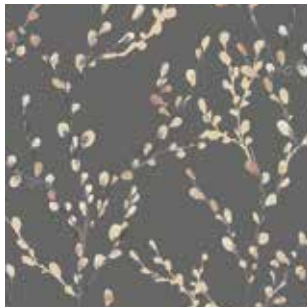
**PLANETARIUM  
COSMOS**

2.05m 2024380A



**DINOSAURS  
PREHISTORIC**

2.05m 2025236A



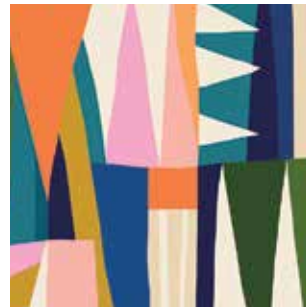
**WILLOW  
DUSKY ROSE**

2.05m 2027380A



**LITTLE FRIENDS  
CREAM**

2.05m 2187112A



**KALEIDOSCOPE  
COLOUR**

2.05m 2186562A



**BUGS  
LIFE**

2.05m 2185238A



**NIGHT SAFARI  
GOLD**

2.05m 2061992A



**WILLOW  
BRAZEN YELLOW**

2.05m 1723100A



**WILLOW  
BIRCH WHITE**

2.05m 1723292A



**NIGHT NIGHT  
GLOW**

2.05m 1690490A

# BLACKOUT PVC FR PRINTS



**MOSAIC  
MONOCHROME**

2m 2183493A



**MARBLE  
SILVER**

2m 1749194A  
89mm 1749194D



**REVERIE  
BASALT**

2m 2049294A  
89mm 2049294D



**TROPICAL PALM BO  
ALOHA**

2m 2184862A



**TROPICAL PALM BO  
LAGOON**

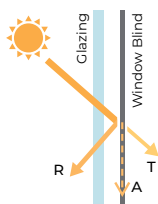
2m 2184577A



**COMO BLACKOUT  
BELLA**

2m 1008673A  
89mm 1008673D

Fabric Features & Solar, Optical & Colour Fastness Properties																						
	Width (m)	Weight (g/m <sup>2</sup> )	Antimicrobial	Solar			Visual			UV Block	CF	DP	SC - EN 14501					Gtot				
				R <sub>s</sub>	A <sub>s</sub>	T <sub>s</sub>	R <sub>v</sub>	A <sub>v</sub>	T <sub>v</sub>				A	B	C	D	E	A	B	C	D	E
<b>Sheer FR Prints</b>																						
Cherry Blossom Misty Blue	2	127	•	47	1	52	48	4	48	40	7	0	0.58	0.56	0.49	0.31	0.47	0.51	0.49	0.43	0.27	0.41
Monet Flower	2	127	•	50	50	0	35	45	19	45	7	0	0.46	0.49	0.46	0.30	0.44	0.40	0.42	0.40	0.26	0.38
Petal White	2	127	•	52	0	48	56	0	44	23	6	0	0.54	0.53	0.47	0.31	0.45	0.47	0.46	0.41	0.27	0.39
<b>Light Filtering Recycled FR Prints</b>																						
Birdsong Colour Crush	2.05	270	•	67	28	5	72	26	2	100	8	0	0.38	0.41	0.40	0.29	0.40	0.33	0.36	0.35	0.25	0.34
Birdsong Daybreak	2.05	270	•	76	13	11	78	14	12	100	8	0	0.33	0.36	0.37	0.28	0.37	0.28	0.31	0.32	0.24	0.32
Birdsong Midnight	2.05	270	•	75	18	7	83	12	5	100	8	0	0.33	0.36	0.37	0.28	0.37	0.28	0.31	0.32	0.24	0.32
Como Lago	2.05	273	•	79	11	10	87	2	11	98	7	0	0.30	0.34	0.36	0.27	0.36	0.26	0.30	0.31	0.24	0.31
Como Odra	2.05	273	•	79	11	10	87	4	9	98	7	0	0.30	0.34	0.36	0.27	0.36	0.26	0.30	0.31	0.24	0.31
Como Verde	2.05	273	•	70	19	11	77	15	8	100	8	0	0.37	0.39	0.39	0.28	0.39	0.32	0.34	0.34	0.25	0.34
Cotton Flower Blush	2.05	272	•	77	8	15	81	6	13	100	7	0	0.32	0.36	0.37	0.28	0.36	0.28	0.31	0.32	0.24	0.32
Cotton Flower Mineral	2.05	272	•	78	8	14	85	4	11	100	7	0	0.32	0.35	0.36	0.27	0.36	0.28	0.30	0.32	0.24	0.31
Cotton Flower Ochre	2.05	272	•	78	7	15	83	4	13	100	8	0	0.32	0.35	0.36	0.28	0.36	0.28	0.30	0.32	0.24	0.31
Flores Autumn	2.05	269	•	82	2	16	88	0	12	100	7	0	0.29	0.33	0.35	0.27	0.35	0.25	0.29	0.30	0.24	0.30
Flores Spring	2.05	269	•	77	9	14	83	5	12	100	7	0	0.32	0.36	0.37	0.28	0.36	0.28	0.31	0.32	0.24	0.32
Lily Mellow Sage	2.05	269	•	70	21	9	78	16	6	100	7	0	0.36	0.39	0.39	0.28	0.39	0.32	0.34	0.34	0.25	0.4
Lily Muted Duckegg	2.05	269	•	76	12	12	82	8	10	100	8	0	0.33	0.36	0.37	0.28	0.37	0.28	0.31	0.32	0.24	0.31
Lily Spring Blossom	2.05	269	•	78	8	14	82	6	12	100	7	0	0.32	0.35	0.36	0.27	0.36	0.28	0.30	0.32	0.24	0.31
Monet Bloom	2.05	263	•	65	18	17	61	27	11	100	7	0	0.41	0.43	0.41	0.29	0.40	0.35	0.37	0.36	0.25	0.35
Ophelia Breeze	2.05	276	•	79	10	11	86	7	7	100	6	0	0.31	0.34	0.36	0.27	0.36	0.27	0.30	0.31	0.24	0.31
Ophelia Zephyr	2.05	276	•	76	9	15	83	4	13	100	7	0	0.33	0.36	0.37	0.28	0.37	0.29	0.31	0.32	0.24	0.32
Swedish Birch Silver	2.05	269	•	77	9	14	84	5	11	100	8	0	0.32	0.36	0.37	0.28	0.36	0.28	0.31	0.32	0.24	0.32
Tropical Palm LF Fiesta	2.05	269	•	44	42	14	43	46	11	100	7	0	0.54	0.55	0.49	0.31	0.47	0.47	0.48	0.43	0.27	0.41
<b>Blackout Recycled FR Prints</b>																						
Bugs Life	2.05	452		75	25	0	84	16	0	100	6	3	0.31	0.36	0.37	0.28	0.37	0.27	0.31	0.32	0.24	0.32
Dinosaurs Prehistoric	2.05	452		75	25	0	84	16	0	100	8	3	0.31	0.36	0.37	0.28	0.37	0.27	0.31	0.32	0.24	0.32
Kaleidoscope Colour	2.05	452		75	25	0	84	16	0	100	8	3	0.31	0.36	0.37	0.28	0.37	0.27	0.31	0.32	0.24	0.32
Little Friends Cream	2.05	452		75	25	0	84	16	0	100	7	3	0.31	0.36	0.37	0.28	0.37	0.27	0.31	0.32	0.24	0.32
Night Night Glow	2.05	420	•	68	32	0	82	18	0	100	6	3	0.36	0.40	0.40	0.28	0.39	0.31	0.35	0.35	0.25	0.34
Night Safari Gold	2.05	449	•	33	67	0	32	68	0	100	7	3	0.60	0.60	0.53	0.32	0.51	0.52	0.52	0.46	0.28	0.44
Planetarium Cosmos	2.05	452		75	25	0	84	16	0	100	8	3	0.31	0.36	0.37	0.28	0.37	0.27	0.31	0.32	0.24	0.32
Willow Birch White	2.05	452		75	25	0	84	16	0	100	8	3	0.31	0.36	0.37	0.28	0.37	0.27	0.31	0.32	0.24	0.32
Willow Brazen Yellow	2.05	452		75	25	0	84	16	0	100	8	3	0.31	0.36	0.37	0.28	0.37	0.27	0.31	0.32	0.24	0.32
Willow Cool Blue	2.05	452		75	25	0	84	16	0	100	8	3	0.31	0.36	0.37	0.28	0.37	0.27	0.31	0.32	0.24	0.32
Willow Dusky Rose	2.05	452		75	25	0	84	16	0	100	8	3	0.31	0.36	0.37	0.28	0.37	0.27	0.31	0.32	0.24	0.32
Willow Morning Mist	2.05	452		52	48	0	50	50	0	100	8	3	0.47	0.49	0.46	0.30	0.44	0.41	0.43	0.40	0.26	0.39
<b>Blackout PVC Moisture Resistant FR Prints</b>																						
Como Blackout Bella	2	423	•	81	19	0	92	8	0	100	8	3	0.27	0.32	0.35	0.27	0.35	0.24	0.28	0.30	0.23	0.30
Marble Silver	2	432	•	80	20	0	91	9	0	100	8	3	0.28	0.33	0.35	0.27	0.35	0.24	0.28	0.31	0.24	0.31
Mosaic Monochrome	2	423	•	81	19	0	92	8	0	100	8	3	0.27	0.32	0.35	0.27	0.35	0.24	0.28	0.30	0.23	0.30
Reverie Basalt	2	423	•	82	18	0	94	6	0	100	8	3	0.27	0.32	0.35	0.27	0.34	0.23	0.27	0.30	0.23	0.30
Tropical Palm BO Aloha	2	423	•	81	19	0	92	8	0	100	8	3	0.27	0.32	0.35	0.27	0.35	0.24	0.28	0.30	0.23	0.30
Tropical Palm BO Lagoon	2	423	•	81	19	0	92	8	0	100	8	3	0.27	0.32	0.35	0.27	0.35	0.24	0.28	0.30	0.23	0.30



**Solar Gain:** The amount of heat increase resulting from solar energy entering a room. It is the total of three separate parts - the amount of energy transmitted directly into the room, the energy which is absorbed by the blind and the proportion of energy which is absorbed by the window.

**R:** % of reflected heat and light.  
**A:** % of absorbed heat and light.  
**T:** % of transmitted heat and light.

**UV Block:** the % of UV light blocked by the fabric.

**Colour Fastness (CF):** Scale of 8, BS EN ISO 105-B02-2014.  
**Darkening Performance (DP):** Scale of 0-4. 0: lowest opacity 4: highest. A rating of 4 indicates the product is completely opaque with no pinholes or light transfer.

**Shading Co-efficient (SC):** The solar heat gain with the blind at the window divided by the solar heat gain with no blind at the window. The lower the shading co-efficient, the higher the efficiency of the fabric.  
**Gtot:** Amount of heat entering through the glazing and shading combined.

**Glazing system (EN 410)**  
**A:** Clear Single Glazing.  
**B:** Clear Double Glazing.  
**C:** Clear Double Glazing Low Emissivity.  
**D:** Solar Control Double Glazing Low Emissivity.  
**E:** Triple Glazing.

## SHEER FR PRINTS



## LIGHT FILTERING RECYCLED FR PRINTS



## BLACKOUT RECYCLED FR PRINTS



## BLACKOUT PVC FR PRINTS

