

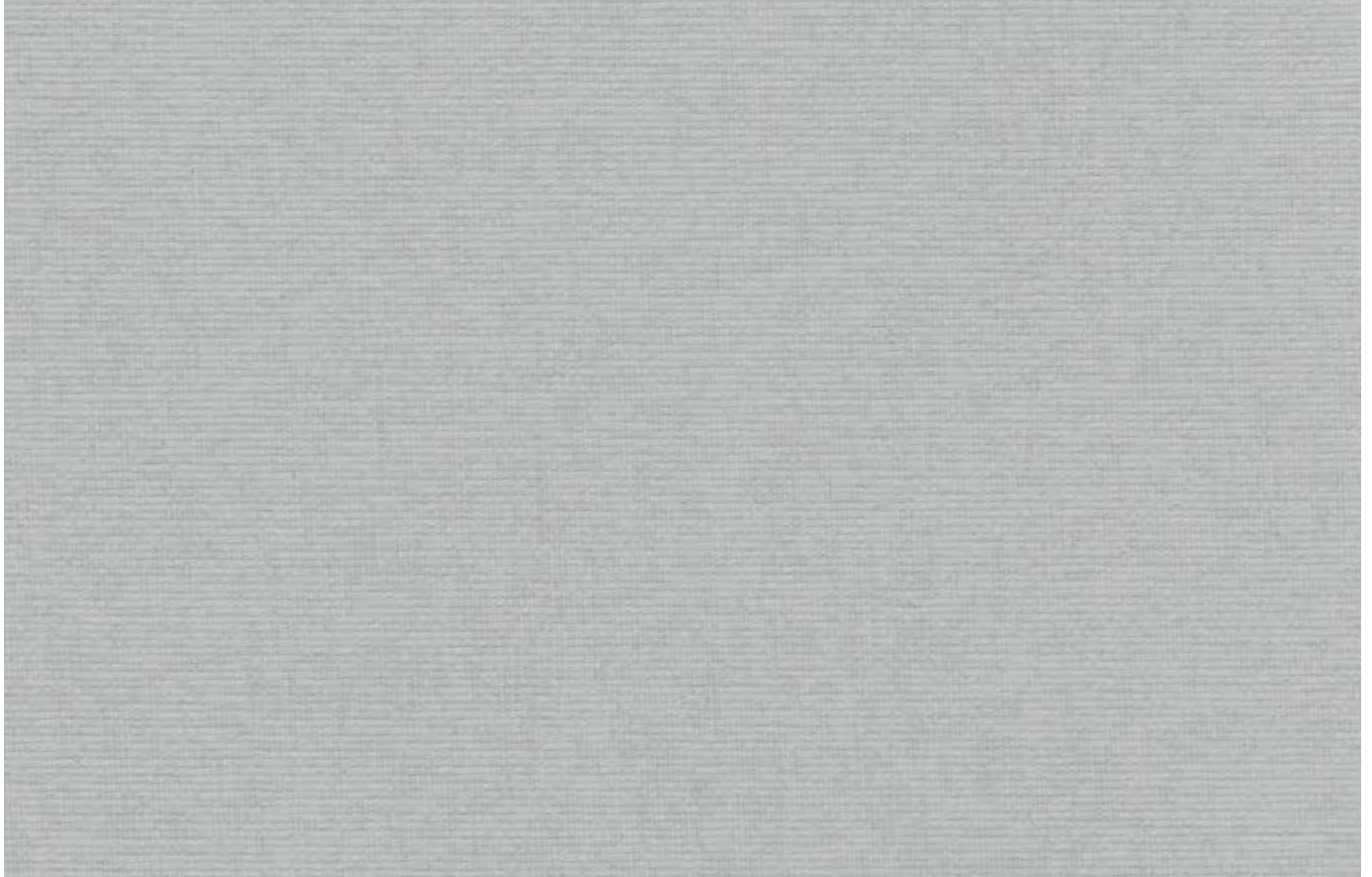
DAYBREAK & SUNSET

FLAME RETARDANT FABRICS

LOUVOLITE
COMMERCIAL

www.louvolitecommercial.com

DAYBREAK | LIGHT FILTERING



ASH



WHITE

2m 1701100A200
2.5m 1701100A250
3m 1701100A
89mm 1701100D
127mm 1701100B



ASH

2m 1701293A200
2.5m 1701293A250
3m 1701293A
89mm 1701293D
127mm 1701293B



FLINT

2m 1701492A200
2.5m 1701492A250
3m 1701492A
89mm 1701492D
127mm 1701492B



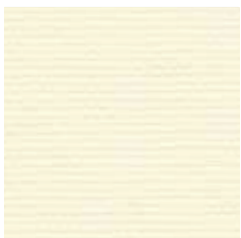
STORM

2m 1701596A200
2.5m 1701596A250
3m 1701596A
89mm 1701596D
127mm 1701596B



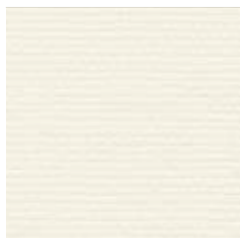
BLACK

2m 1701299A200
2.5m 1701299A250
3m 1701299A
89mm 1701299D
127mm 1701299B



ALABASTER

2m 1701123A200
2.5m 1701123A250
3m 1701123A
89mm 1701123D
127mm 1701123B



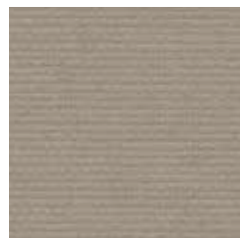
STONE

2m 1701992A200
2.5m 1701992A250
3m 1701992A
89mm 1701992D
127mm 1701992B



MUSHROOM

2m 1701793A200
2.5m 1701793A250
3m 1701793A
89mm 1701793D
127mm 1701793B



MINK

2m 1701642A200
2.5m 1701642A250
3m 1701642A
89mm 1701642D
127mm 1701642B



MOCHA

2m 1701752A200
2.5m 1701752A250
3m 1701752A
89mm 1701752D
127mm 1701752B

3 WIDTHS

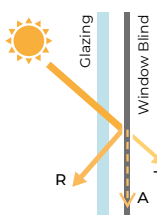
2.05m, 2.5m and 3m

10 COLOURS

LIGHT FILTERING

Specifications	Daybreak
Colour Range	10
Dim Out	Light Filtering
Composition	100% Polyester
Exterior Colour	Self-coloured
Roller Width	2m, 2.5m, 3m
Roller Roll Length	20m
Vertical Louvre Widths	89mm, 127mm
Vertical Roll Length	100m
Weight	247g/m ²
Thickness	0.36mm
Blind Types	Roller, Panel, Vertical
Colour Fastness (scale of 8)	6-8 - BS EN ISO 105-B02-2014
Flammability Standard	BS 5867 Part 2 Type B
Environmental Certification	OEKO-TEX® SteP Greenshield - VOC Safe Fabrics
Cleaning	Not suitable for cleaning with a damp or wet cloth.

Daybreak - Solar, Optical & Colour Fastness Properties																			
	Solar			Visual			UV Block	CF	DP	SC - EN 14501					Gtot				
	R _s	A _s	T _s	R _v	A _v	T _v				A	B	C	D	E	A	B	C	D	E
Alabaster	78	10	12	84	5	11	100	8	0	0.32	0.35	0.36	0.28	0.36	0.27	0.30	0.32	0.24	0.31
Ash	48	50	2	48	51	1	100	7	0	0.50	0.52	0.47	0.31	0.46	0.44	0.45	0.41	0.27	0.40
Black	5	95	0	5	95	0	100	8	0	0.78	0.77	0.63	0.35	0.60	0.68	0.67	0.55	0.30	0.52
Flint	31	69	0	31	69	0	100	8	0	0.61	0.61	0.54	0.32	0.51	0.53	0.53	0.47	0.28	0.45
Mink	31	69	0	27	73	0	100	6	0	0.61	0.62	0.54	0.32	0.51	0.53	0.54	0.47	0.28	0.45
Mocha	21	79	0	19	81	0	100	7	0	0.68	0.68	0.57	0.33	0.55	0.59	0.59	0.50	0.29	0.48
Mushroom	62	32	6	47	53	0	100	6	0	0.41	0.44	0.42	0.29	0.41	0.36	0.38	0.37	0.25	0.36
Stone	69	23	8	72	22	6	100	7	0	0.37	0.40	0.40	0.28	0.39	0.32	0.35	0.34	0.25	0.34
Storm	18	83	0	17	83	0	100	8	0	0.70	0.69	0.59	0.34	0.56	0.61	0.60	0.51	0.29	0.49
White	82	12	7	85	12	4	100	8	0	0.28	0.32	0.35	0.27	0.35	0.24	0.28	0.30	0.24	0.30



Solar Gain: The amount of heat increase resulting from solar energy entering a room. It is the total of three separate parts - the amount of energy transmitted directly into the room, the energy which is absorbed by the blind and the proportion of energy which is absorbed by the window.

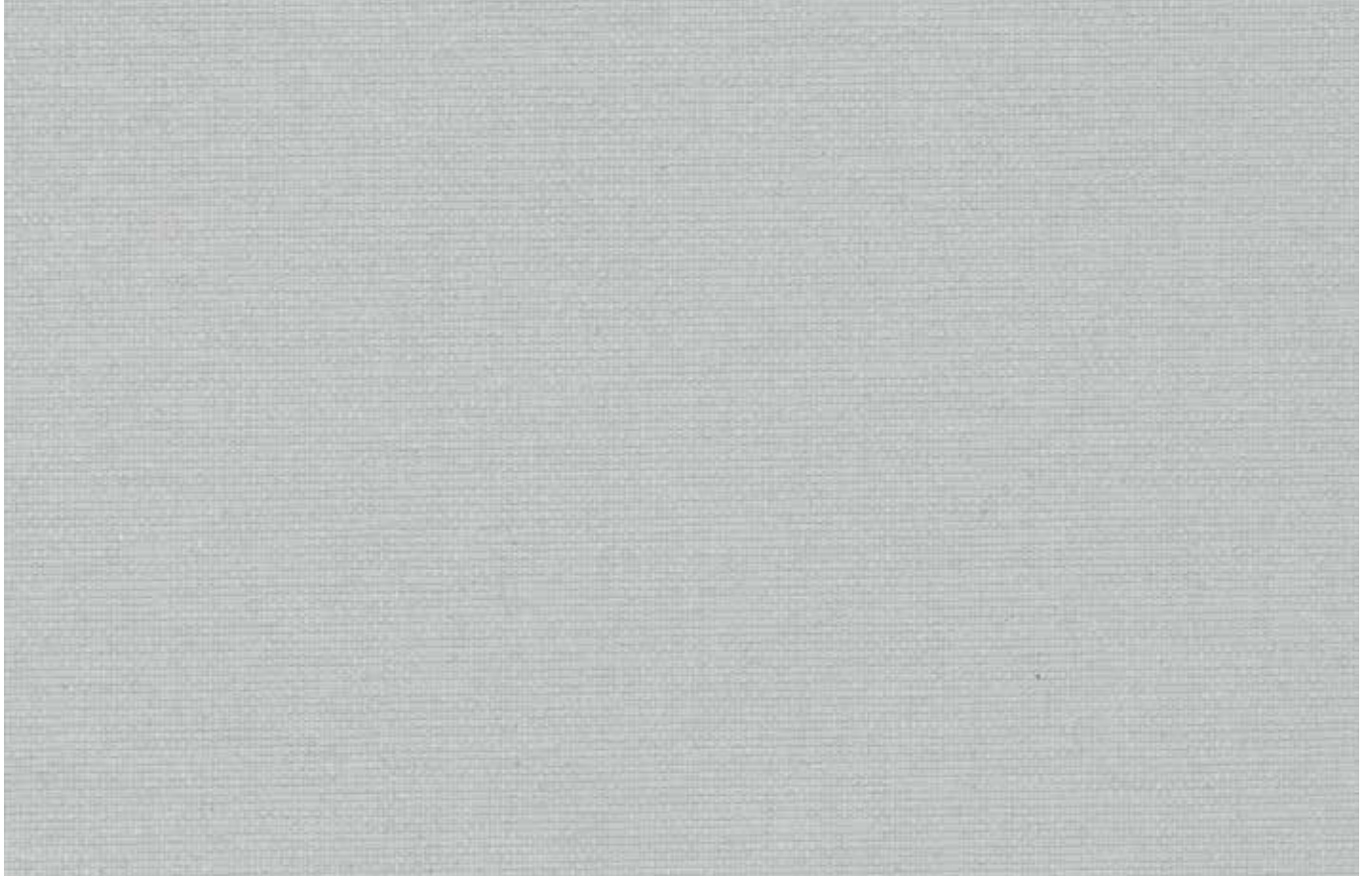
R: % of reflected heat and light.
A: % of absorbed heat and light.
T: % of transmitted heat and light.
UV Block: the % of UV light blocked by the fabric.
Colour Fastness (CF): Scale of 8, BS EN ISO 105-B02-2014.

Darkening Performance (DP): Scale of 0-4. 0: lowest opacity 4: highest. A rating of 4 indicates the product is completely opaque with no pinholes or light transfer.
Please note: Blackout fabric does not create total darkness. As a blind there will be lightstrike around the blind edges.

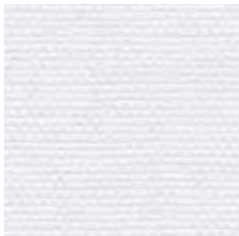
Shading Co-efficient (SC): The solar heat gain with the blind at the window divided by the solar heat gain with no blind at the window. The lower the shading co-efficient, the higher the efficiency of the fabric.
Gtot: Amount of heat entering through the glazing and shading combined.

Glazing system (EN 410)
A: Clear Single Glazing.
B: Clear Double Glazing.
C: Clear Double Glazing Low Emissivity.
D: Solar Control Double Glazing Low Emissivity.
E: Triple Glazing.

SUNSET | BLACKOUT



ASH



WHITE

2m 1700100A200
2.5m 1700100A250
3m 1700100A
89mm 1700100D



ASH

2m 1700293A200
2.5m 1700293A250
3m 1700293A
89mm 1700293D



FLINT

2m 1700492A200
2.5m 1700492A250
3m 1700492A
89mm 1700492D



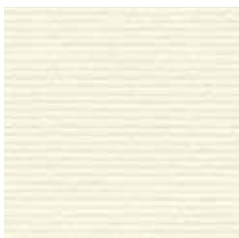
STORM

2m 1700596A200
2.5m 1700596A250
3m 1700596A
89mm 1700596D



BLACK

2m 1700299A200
2.5m 1700299A250
3m 1700299A
89mm 1700299D



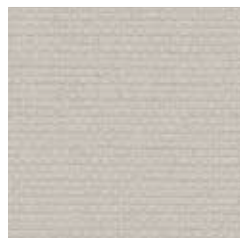
ALABASTER

2m 1700123A200
2.5m 1700123A250
3m 1700123A
89mm 1700123D



STONE

2m 1700992A200
2.5m 1700992A250
3m 1700992A
89mm 1700992D



MUSHROOM

2m 1700793A200
2.5m 1700793A250
3m 1700793A
89mm 1700793D



MINK

2m 1700642A200
2.5m 1700642A250
3m 1700642A
89mm 1700642D



MOCHA

2m 1700752A200
2.5m 1700752A250
3m 1700752A
89mm 1700752D

3 WIDTHS

2.05m, 2.5m and 3m

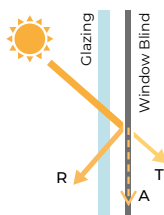
10 COLOURS

BLACKOUT

Specifications	Sunset
Colour Range	10
Dim Out	Blackout
Composition	100% Polyester
Exterior Colour	White back
Roller Width	2m, 2.5m, 3m
Roller Roll Length	20m
Vertical Louvre Widths	89mm
Vertical Roll Length	100m
Weight	374g/m ²
Thickness	0.52mm
Blind Types	Roller, Panel, Vertical
Colour Fastness (scale of 8)	6-7 - BS EN ISO 105-B02-2014
Flammability Standard	BS 5867 Part 2 Type B
Environmental Certification	OEKO-TEX® SteP Greenshield - VOC Safe Fabrics
Cleaning	Not suitable for cleaning with a damp or wet cloth.

Sunset - Solar, Optical & Colour Fastness Properties

	Solar			Visual			UV Block	CF	DP	SC - EN 14501					Gtot				
	R _s	A _s	T _s	R _v	A _v	T _v				A	B	C	D	E	A	B	C	D	E
Alabaster	75	25	0	84	16	0	100	7	3	0.31	0.35	0.37	0.28	0.37	0.27	0.31	0.32	0.24	0.32
Ash	75	25	0	84	16	0	100	7	3	0.31	0.35	0.37	0.28	0.37	0.27	0.31	0.32	0.24	0.32
Black	75	25	0	84	16	0	100	7	3	0.31	0.35	0.37	0.28	0.37	0.27	0.31	0.32	0.24	0.32
Flint	75	25	0	84	16	0	100	7	3	0.31	0.35	0.37	0.28	0.37	0.27	0.31	0.32	0.24	0.32
Mink	75	25	0	84	16	0	100	7	3	0.31	0.35	0.37	0.28	0.37	0.27	0.31	0.32	0.24	0.32
Mocha	75	25	0	84	16	0	100	7	3	0.31	0.35	0.37	0.28	0.37	0.27	0.31	0.32	0.24	0.32
Mushroom	75	25	0	84	16	0	100	7	3	0.31	0.35	0.37	0.28	0.37	0.27	0.31	0.32	0.24	0.32
Stone	75	25	0	84	16	0	100	7	3	0.31	0.35	0.37	0.28	0.37	0.27	0.31	0.32	0.24	0.32
Storm	75	25	0	84	16	0	100	7	3	0.31	0.35	0.37	0.28	0.37	0.27	0.31	0.32	0.24	0.32
White	75	25	0	84	16	0	100	6	3	0.31	0.35	0.37	0.28	0.37	0.27	0.31	0.32	0.24	0.32



Solar Gain: The amount of heat increase resulting from solar energy entering a room. It is the total of three separate parts - the amount of energy transmitted directly into the room, the energy which is absorbed by the blind and the proportion of energy which is absorbed by the window.

R: % of reflected heat and light.
A: % of absorbed heat and light.
T: % of transmitted heat and light.
UV Block: the % of UV light blocked by the fabric.
Colour Fastness (CF): Scale of 8, BS EN ISO 105-B02-2014.

Darkening Performance (DP): Scale of 0-4. 0: lowest opacity 4: highest. A rating of 4 indicates the product is completely opaque with no pinholes or light transfer.
Please note: Blackout fabric does not create total darkness. As a blind there will be lightstrike around the blind edges.

Shading Co-efficient (SC): The solar heat gain with the blind at the window divided by the solar heat gain with no blind at the window. The lower the shading co-efficient, the higher the efficiency of the fabric.
Gtot: Amount of heat entering through the glazing and shading combined.

Glazing system (EN 410)
A: Clear Single Glazing.
B: Clear Double Glazing.
C: Clear Double Glazing Low Emissivity.
D: Solar Control Double Glazing Low Emissivity.
E: Triple Glazing.

DAYBREAK & SUNSET



t: +44 (0)161 882 5050 e: commercial@louvolute.com
www.louvolutecommercial.com